

# Long-term woodland dynamics in Central Europe: from estimations to a realistic model

*Péter Szabó*

**Institute of Botany of the ASCR, v. v. i.**  
Zámek 1, CZ - 252 43 Průhonice, Czech Republic  
[www.ibot.cas.cz](http://www.ibot.cas.cz)



# About myself

- Studied linguistics and history in Budapest
- Specialization in the Middle Ages, PhD in interdisciplinary medieval studies
- Research interest (woodland historical ecology) lies between *history*, *archaeology* and *ecology*
  - Department of Medieval Archaeology at Eötvös Loránd University, Budapest, Hungary
  - Department of Archaeology at the University of the Czech Republic



# Disappearance and transformation of woodland since the Neolithic

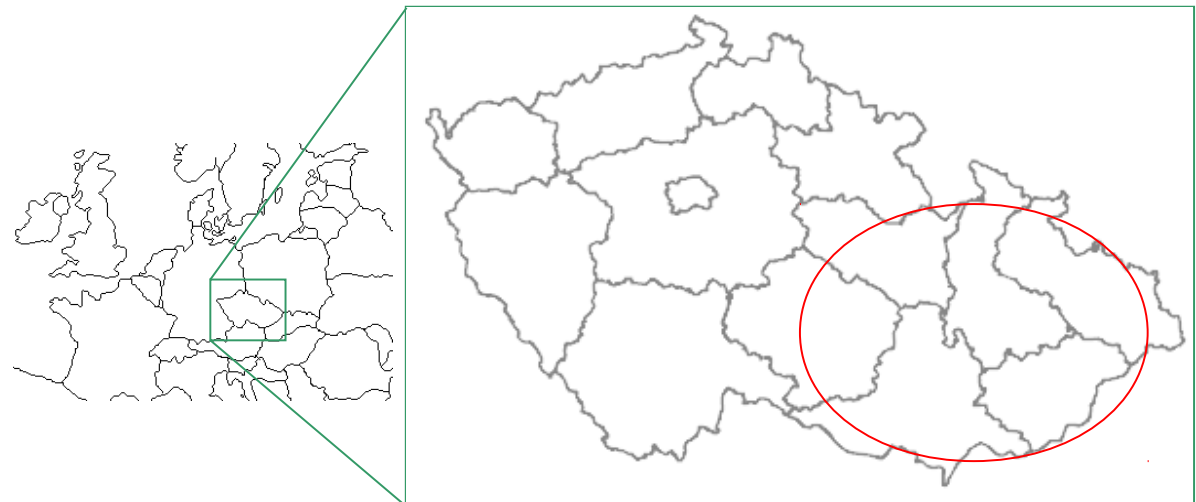
Several neglected aspects:

- ~~Woodland~~ ~~interdisciplinary~~ ~~AD 1800~~ is inferred from population density
- Differences in scaling and resolution
- Effects of traditional management on tree composition
- Focus on trees, although herbaceous vegetation is key to biodiversity



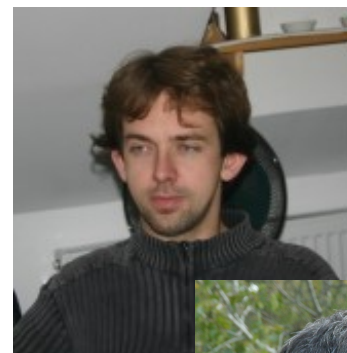
# Aims

- to combine historical, palaeoecological, vegetation ecological and archaeological data
- to build a complex model of long-term woodland dynamics in a well-defined, larger study region (Moravia) with the highest resolution possible
- to relate past patterns in the tree layer to patterns in the herb layer
- to analyze the role of humans in woodland dynamics

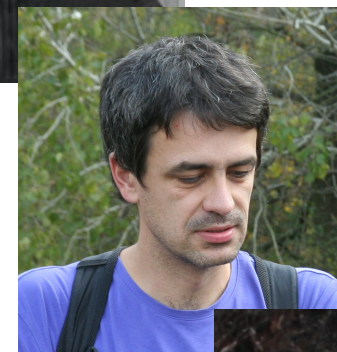


## Research team

History: Péter Szabó

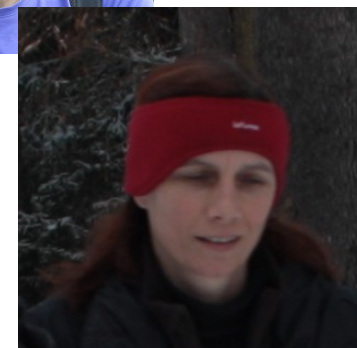


Palaeoecology: Petr Kuneš



Vegetation Ecology: Radim Hédli

GIS: Jana Müllerová



- young team:  
average age 33.8 yrs
- balanced gender structure:  
42% women, 58 % men



# Preparation

Interdisciplinary project – fairly long preparation process

general outline by working group leaders → individual parts  
→ detailed research plan → feedback from all involved →  
updating → final version

Simultaneously: technical details, consultations, budget preparation

However: from the side of ERC straightforward and easy procedure!



## Why (I think) we succeeded

Key point : *well thought out strategy* (find out what makes you special and focus on that)

Good project and good CV are a must

- unusual and interdisciplinary  
(first round evaluation)
- right time: start of interdisciplinary projects
- good team (essential because of interdisciplinarity), good institutional background
- deliberate focus on novel aspects
- lot of effort put into presentation (interview crucial)



## Novelty and potential

- **Large studies – higher resolution** amount of sources -  
highest resolution possible
- Interdisciplinarity
  - high quality in all disciplines
  - synergetic results
- Paradigm shift in ecology
- Practical application: nature conservation and forestry





## What helped me personally

- postgraduate education in international environment and in English
- good overview of general issues of interdisciplinarity
- historical ecology is very much an upcoming discipline

